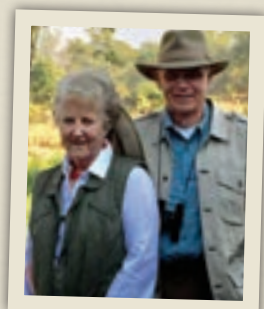


Exciting improvements are coming to Galilee! Jill Derby and Steve Talbot, members of the Galilee Advisory Council and long-term supporters of the camp, have committed \$150,000 to kick-start the lower dormitory project.

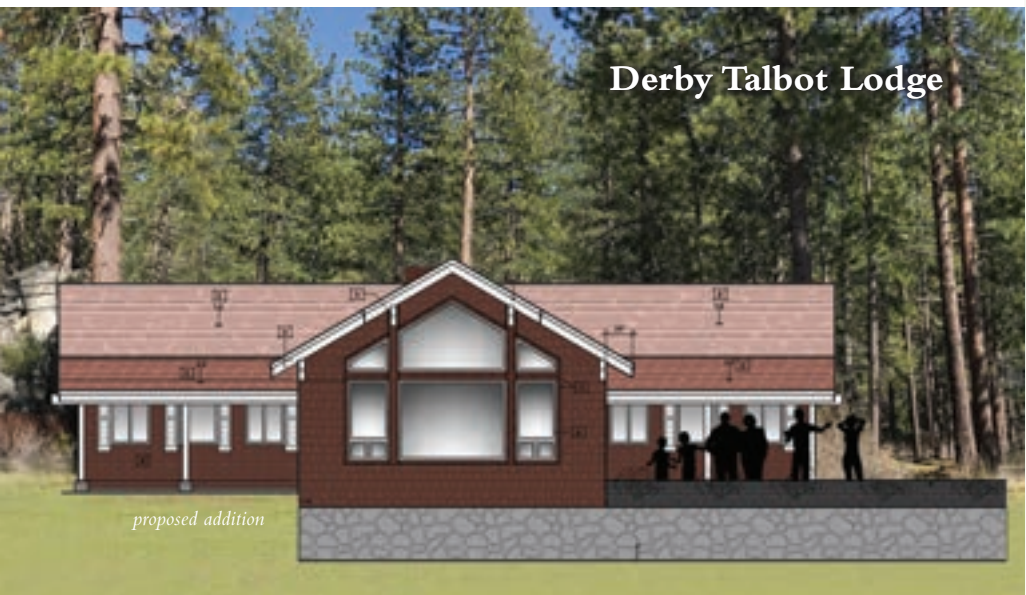


Jill Derby and Steve Talbot

**This \$400,000 project will include a complete renovation of the existing facility, as well as the addition of a meeting room and outdoor gathering area.** Although the two “sides” of the building have been called Belmont and Round Mountain, after Nevada mining towns, the entire building itself has never been named. With Jill and Steve’s generous lead gift, the building will now be known as the Derby-Talbot Lodge. Thank you to Jill and Steve for their incredible generosity.

*“Since first attending Galilee in 1948, the world has changed in complexity, tenor and pace. In the midst of this restless and unpredictable world, Galilee remains a quiet space of enduring spiritual renewal and grace – an anchor for the soul in a churning sea. We are committed that this treasure of ground and hearts advance and thrive.”*

*~ Jill Derby and Steve Talbot*



**NAMING OPPORTUNITIES:** Would you like to both support Camp Galilee and honor someone significant in the life or history of your worshipping community? This project includes several naming opportunities for you to consider: a bedroom, the garden, the ADA Ramp. Show your appreciation with a gift and a name. Contact Stuart Campbell for details.